



BERWICK BANK WIND FARM OFFSHORE ENVIRONMENTAL IMPACT ASSESSMENT

APPENDIX 6.5: CUMULATIVE EFFECTS – LOCATION OF PROJECTS AND PLANS

Document Status

Version	Purpose of Document	Authored by	Reviewed by	Approved by	Review Date
FINAL	Final	RPS	RPS	RPS	October 2022

Approval for Issue

Ross Hodson *RA Hodson* 27 September 2022

Prepared by: **RPS**
 Prepared for: **SSE Renewables**

Checked by: **Andrew Logie (SSER)**
 Accepted by: **Anja Schoene (SSER)**
 Approved by: **Ross Hodson (SSER)**

© Copyright RPS Group Plc. All rights reserved.

The report has been prepared for the exclusive use of our client.

The report has been compiled using the resources agreed with the client and in accordance with the scope of work agreed with the client. No liability is accepted by RPS for any use of this report, other than the purpose for which it was prepared. The report does not account for any changes relating to the subject matter of the report, or any legislative or regulatory changes that have occurred since the report was produced and that may affect the report. RPS does not accept any responsibility or liability for loss whatsoever to any third party caused by, related to or arising out of any use or reliance on the report.

RPS accepts no responsibility for any documents or information supplied to RPS by others and no legal liability arising from the use by others of opinions or data contained in this report. It is expressly stated that no independent verification of any documents or information supplied by others has been made.

RPS has used reasonable skill, care and diligence in compiling this report and no warranty is provided as to the report's accuracy.

CONTENTS

- 1. Introduction1
 - 1.1. Background1
 - 1.2. Structure of this Appendix1
- 2. Offshore Plans, Projects and Activities1

FIGURES

- Figure 2.1: Marine Aggregate and Disposal Projects, Plans and Activities within 200 km of the Proposed Development1
- Figure 2.2: Offshore Energy Projects, Plans and Activities within 550 km from the Proposed Development2
- Figure 2.3: Oil and Gas Projects, Plans and Activities within 200 km of the Proposed Development.....2
- Figure 2.4: Cables and Pipeline Projects, Plans and Activities within 100 km of the Proposed Development.....3
- Figure 2.5: Shipping and Navigation - Ports within 200 km of the Proposed Development3

1. INTRODUCTION

1.1. BACKGROUND

1. In order to undertake a comprehensive Cumulative Effects Assessment (CEA), a long list of relevant projects, plans and activities occurring within a large Zone of Influence (ZoI) area was produced. The CEA long list collates the details of operational or proposed projects, plans and activities in the central and northern North Sea, and includes those within both the UK and adjoining international jurisdictions.
2. The CEA long list for the Proposed Development is included in volume 3, appendix 6.4 and all projects, plans and activities on the CEA long list are shown on the figures presented in this appendix unless otherwise stated.

1.2. STRUCTURE OF THIS APPENDIX

3. The structure of this appendix is as follows:
 - Figures for offshore plans, projects and activities included in the CEA long list as follows:
 - marine aggregate and disposal sites (Figure 2.1);
 - offshore energy (Figure 2.2);
 - oil and gas (Figure 2.3);
 - cables and pipelines (Figure 2.4); and
 - shipping and navigation (Figure 2.5).
 - Figures for other offshore plans, projects and activities included in the CEA long list are not presented here but are assessed in the assessment of effect chapters (volume 2, chapters 7 to 21).

2. OFFSHORE PLANS, PROJECTS AND ACTIVITIES

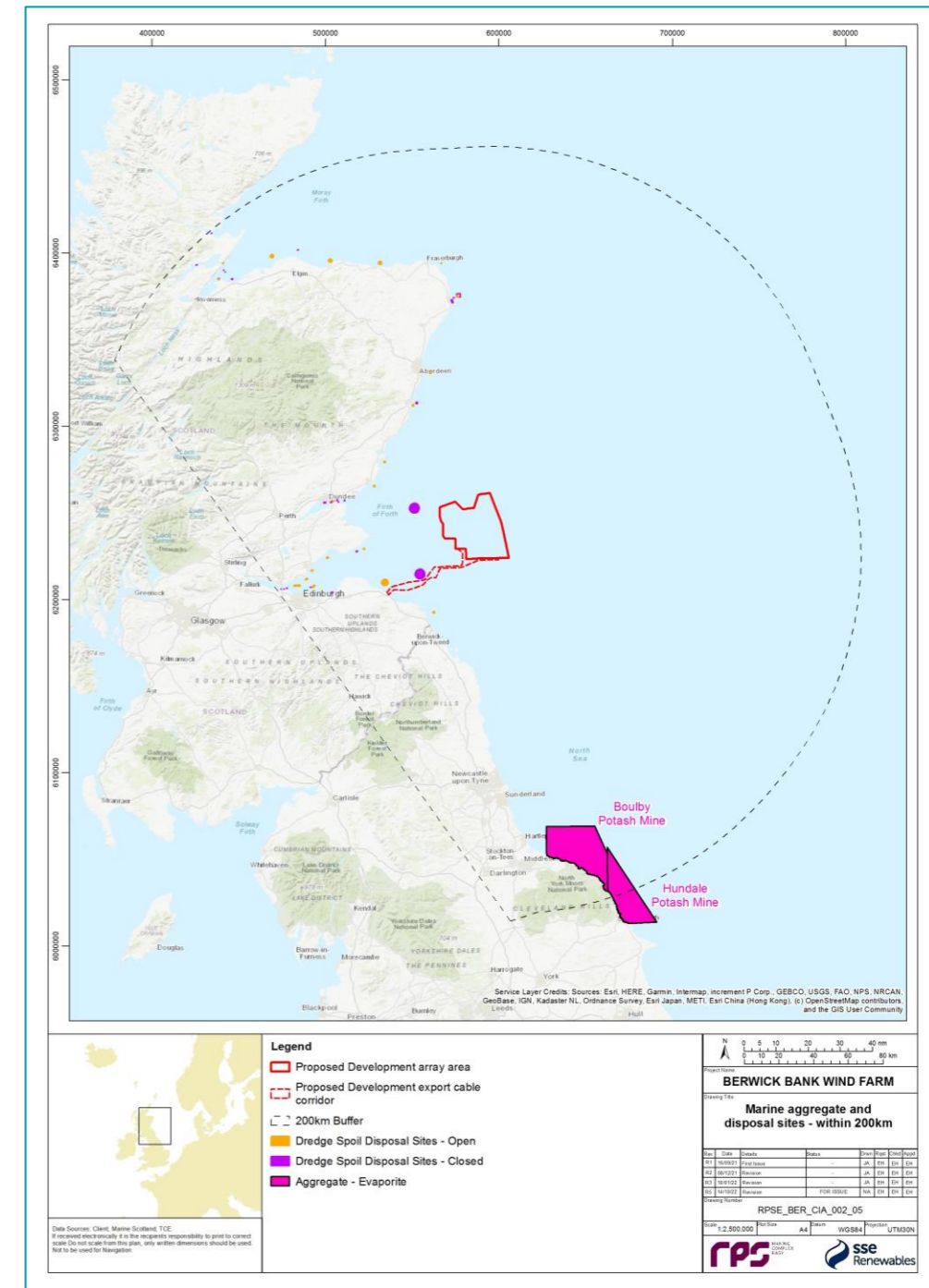


Figure 2.1: Marine Aggregate and Disposal Projects, Plans and Activities within 200 km of the Proposed Development

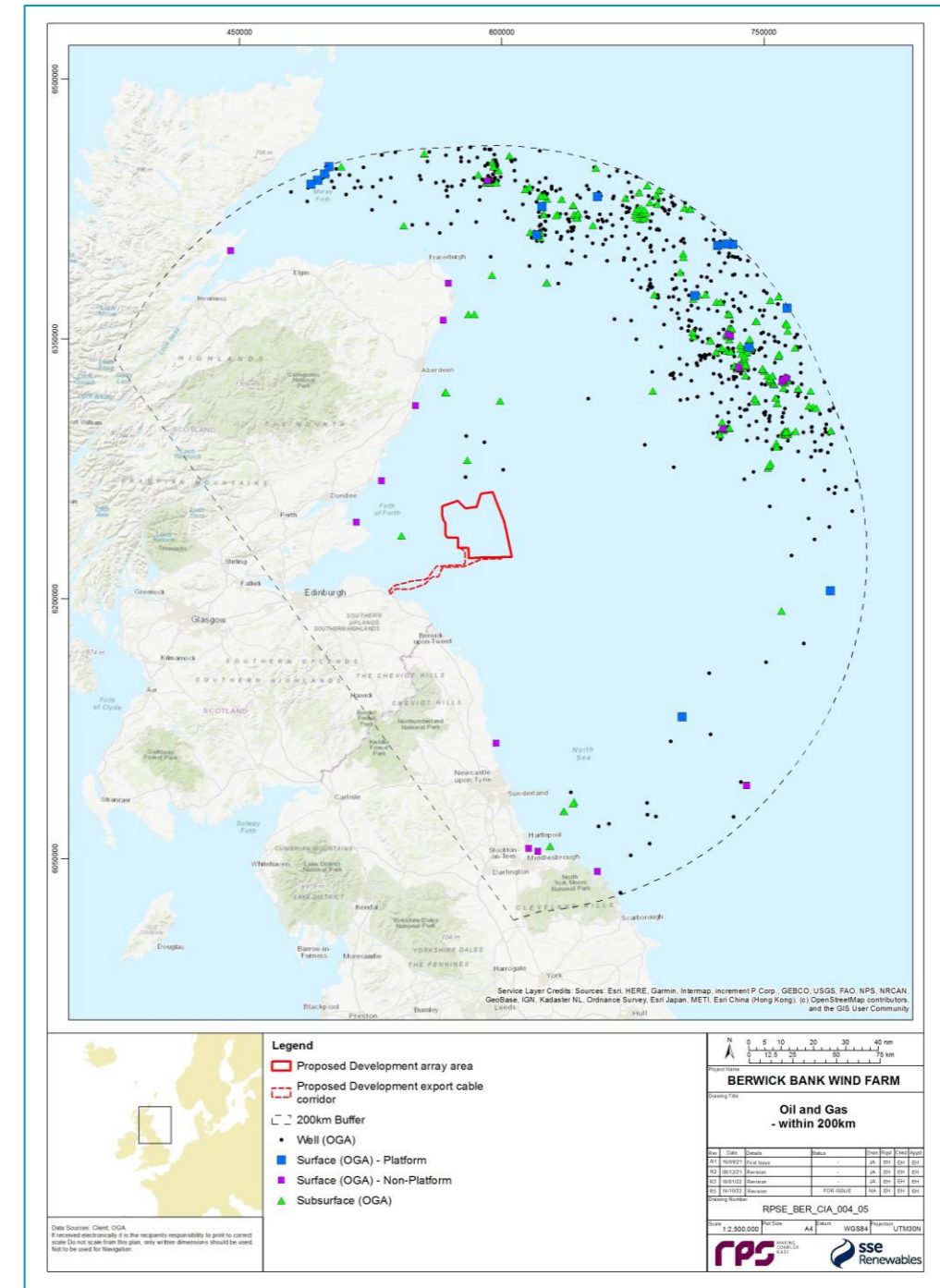
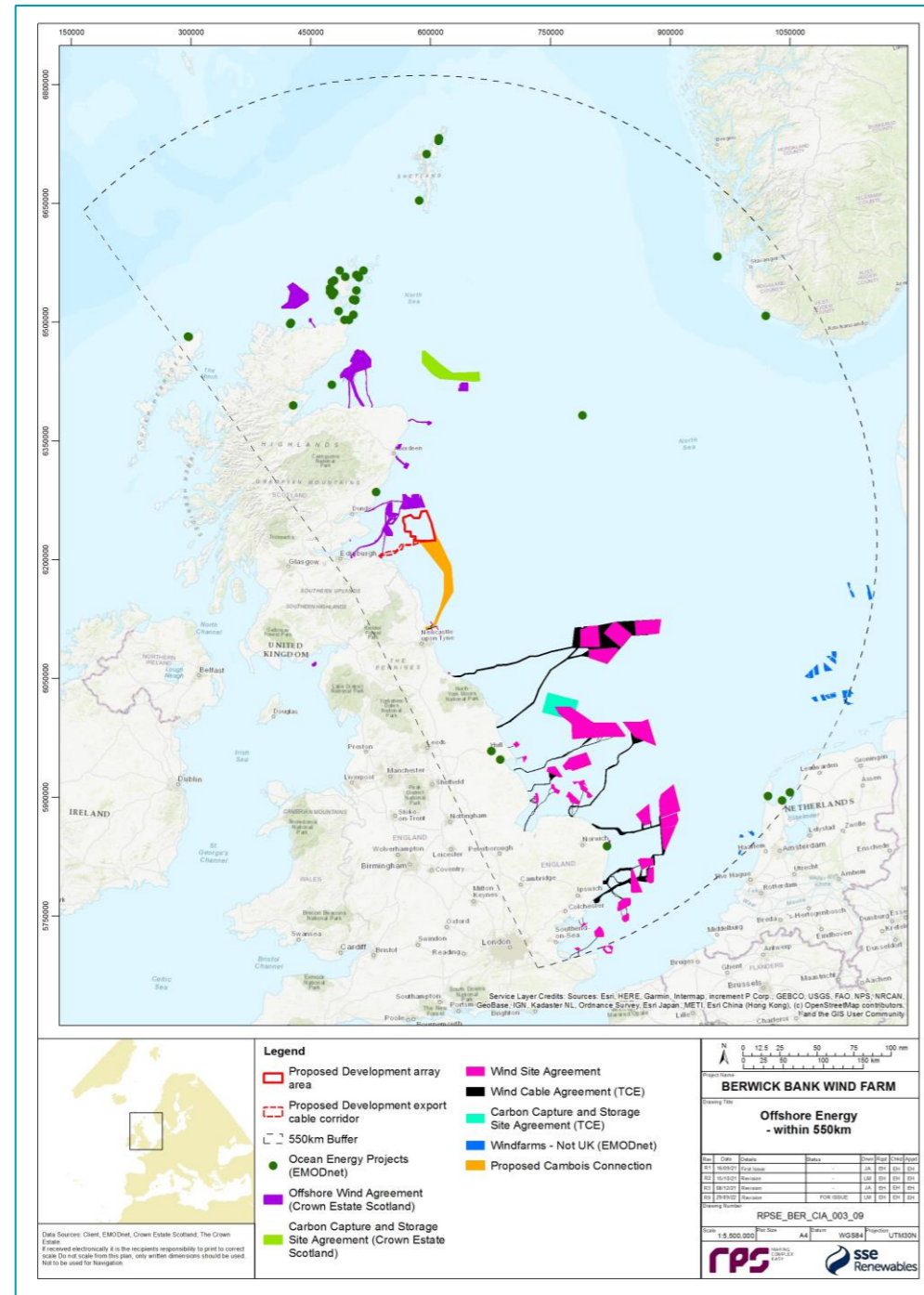


Figure 2.2: Offshore Energy Projects, Plans and Activities within 550 km from the Proposed Development¹

Figure 2.3: Oil and Gas Projects, Plans and Activities within 200 km of the Proposed Development

¹ Tier 4 Projects (including ScotWind Projects except for West of Orkney Wind Farm which is a Tier 3 Project) have not been presented in this figure as they have been screened out of the CEA.

